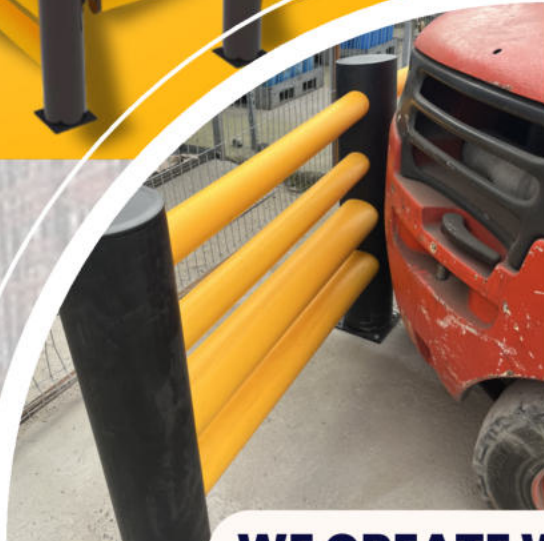


SAF^EWAY

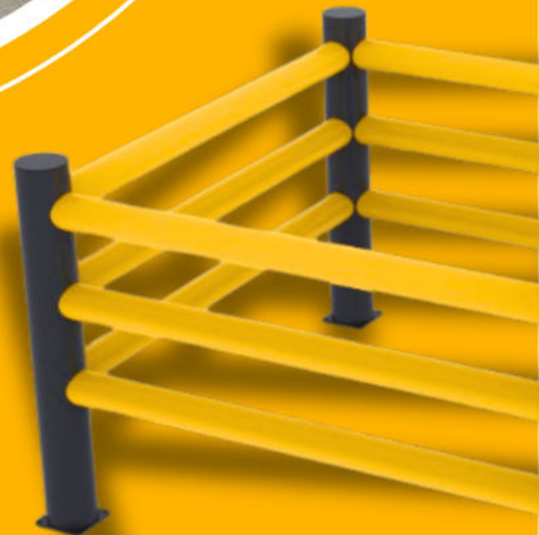


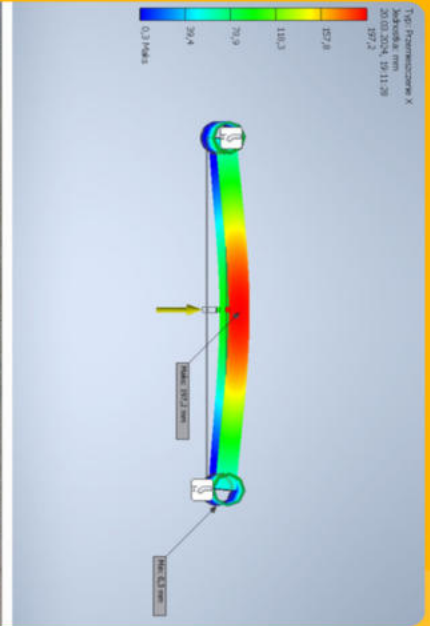
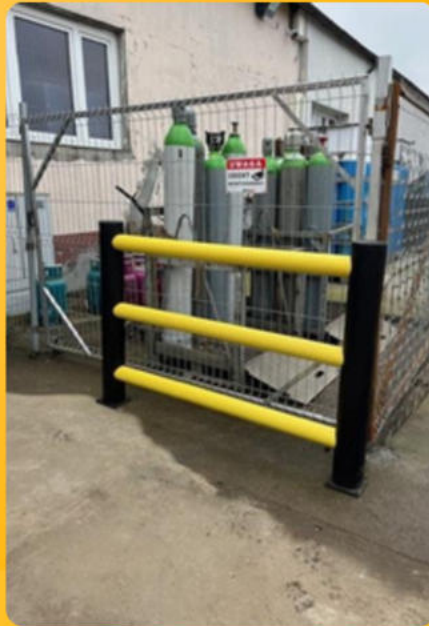
WE CREATE WITH PASSION



CATALOG

SAFE SOLUTION





Clarity and conciseness

It should be easy to understand.



Customer focus

It shows who the company serves and what problems it solves.



Uniqueness

It distinguishes the company from the competition.



Inspiration

It motivates employees and builds the company's image.



Safety

Therefore, everything we do is to support them.

- **Prevention:** Minimizing the risk of injuries, occupational diseases, and fatalities in the workplace.
- **Healthcare:** Ensuring a healthy and safe work environment.
- **Compliance:** Meeting legal requirements and industry standards.
- **Safety Culture Development:** Strengthening the commitment of top management and employees, communication, participation, and learning from mistakes.
- **Continuous Improvement:** Implementing a proactive approach to safety management, regular assessments, and adjustments to procedures.
- **Training and Competencies:** Developing employee knowledge and skills in occupational health and safety through regular training (initial and on-the-job) and development programs.
- **Technological Innovation:** Implementing safe and ergonomic solutions and modern technologies to minimize risk.
- **Business Integration:** Linking occupational health and safety goals with the company's strategy (sustainable development, CSR, image). Risk Management: Proactively identifying, eliminating, and minimizing threats, not just reacting to accidents.
- **Risk Management:** Proactively identifying, eliminating, and minimizing threats, not just reacting to accidents.

OUR PRODUCTS

- They fulfill their protective functions (people, goods, machines, vehicles).
- They are certified and tested.
- They are made of special plastic.
- They minimize operating costs.
- They come in colors required by all global occupational health and safety organizations: yellow, black, and orange.
- They are flexible and return to their original shape after a collision, without tearing out screws from the floor.
- They are aesthetically pleasing and do not take up much space in the hall or other designated facility.
- In the event of damage, a specific component is replaced, not the entire unit.
- All products have their own technical data sheets with detailed descriptions.

LUCA

Flexible protective barriers

LENA



- They are used for innovative and economical separation of pedestrian zones and routes with lower traffic volumes.
- They are manufactured in modular systems and can be supplied in custom lengths and heights.
- Repair and maintenance costs are reduced to a minimum.
- Versatile range of applications - in production, warehouses, or logistics.
- Mounting materials are always included.
- Colors: yellow, black, and orange.



End, middle, and corner posts
 Φ140 mm H: 1100 mm or (H: 500 mm - 5000 mm)
 Φ90 mm beams

ADONIS

Flexible protective barriers

- They are used for innovative and economical separation of areas, machinery, and pedestrian routes in high-traffic areas.
- They feature additional rotating rings that reduce impact force.
- They are manufactured in modular systems and can be supplied in custom lengths and heights.
- They minimize repair and maintenance costs.
- They are versatile in applications – in production, warehouses, or logistics.
- Fastening materials are always included.
- Available in yellow, black, and orange.
- Adonis barriers also protect higher areas in warehouse spaces.



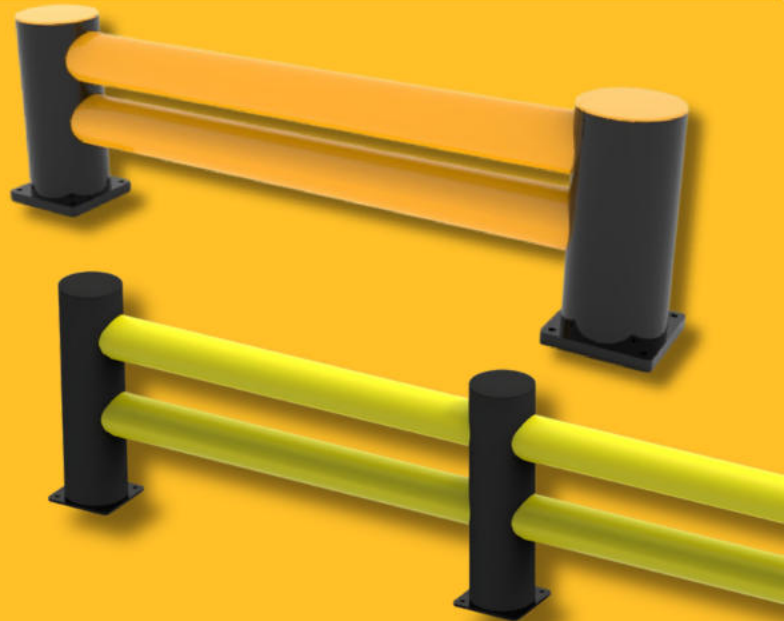
End, middle, and corner posts

Φ200 mm H: 1200 mm or (H: 800 mm - 5000 mm)
 Ring diameter is 220 mm
 2 top beams Φ90 mm, 2 bottom beams Φ140 mm

KOBA

Flexible protective barriers

- They are used for innovative and economical separation of areas, machinery, and pedestrian routes in high-traffic areas.
- They feature additional rotating rings that reduce impact force.
- They are manufactured in modular systems and can be supplied in custom lengths and heights.
- They minimize repair and maintenance costs.
- They are versatile and can be used in production, warehouses, or logistics.
- Fastening materials are always included.
- Available in yellow, black, and orange.
- Koba barriers additionally protect the fronts of racks, objects under fire extinguishers, or low-mounted wall structures.



End, middle, and corner posts Φ200 mm
 H: 700 mm or (H: 700 mm - 5000 mm)
 Ring diameter is 220 mm
 2 beams Φ140 mm

KERB FAZO

- The floor barrier protects the lower parts of shelves, machines, and walls. Its standard and custom lengths perfectly fill any gap. Mounting hardware is included.



Φ140mm beams
Lengths 300mm - 3000mm

HEIGHT LIMITER

ZOFA

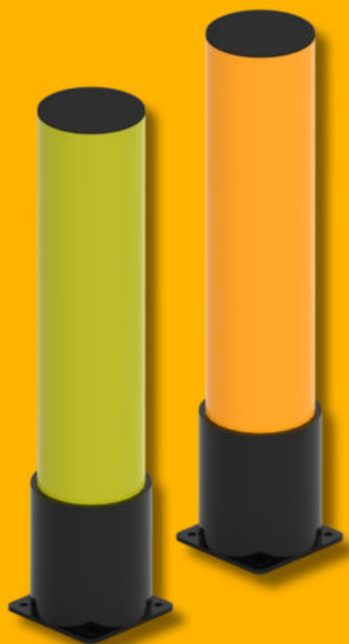
- The height limiter protects higher parts of warehouses and halls from damage, such as the frames of overhead drive-through gates. The second version is the same model with a built-in sound sensor.



Beams with a diameter of 140mm and individual lengths of 500mm - 3000mm

BOLLARD PETER

- The Peter flexible bumper is optimally suited for use wherever it's needed. Manufactured in various heights, it allows you to find the perfect solution for every situation. Equipped with an additional rotating ring, it absorbs impacts even more. Mounting hardware included.
- A highly durable product.



Φ Bollard 200mm, Ring 220mm



SEDA SWING GATE

SEDA

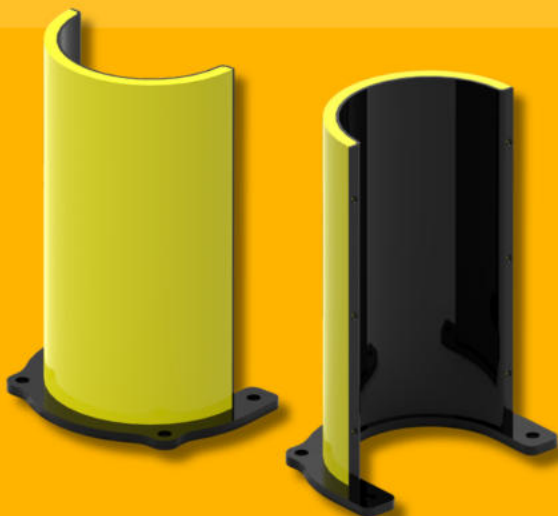
- A swing gate that complements pedestrian traffic routes, with built-in hydraulic hinges. Made of durable, flexible material.

Beam diameter 90 mm
Width 700 mm - 1200 mm

Safedock

- A gate that most often protects loading docks or separates employees from machines during work.

Height h: 700 mm - h 1200 mm
Post diameter 200 mm, equipped with an additional 220 mm swivel ring.
Beam diameter 140 mm



CORNER-RACK PROTECTIVE FENDER

Greg

H: 360mm

Made of the highest quality pipes and sheets.



Powder coated and/or galvanized



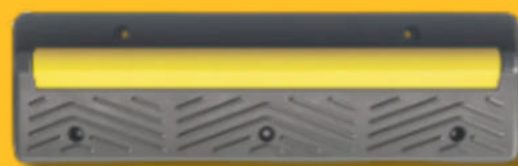
Most often yellow and black, yellow or red and white



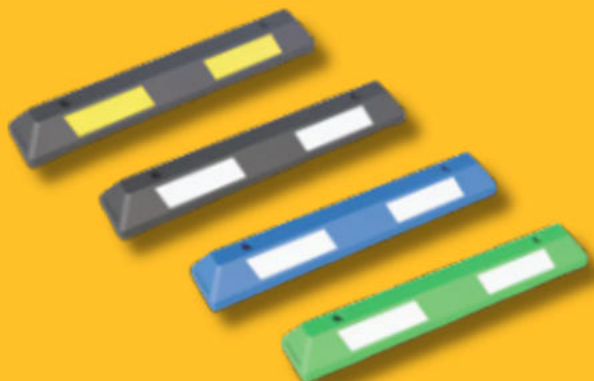
They find excellent locations in steel mills and heating plants.



Made of the highest quality rubber.

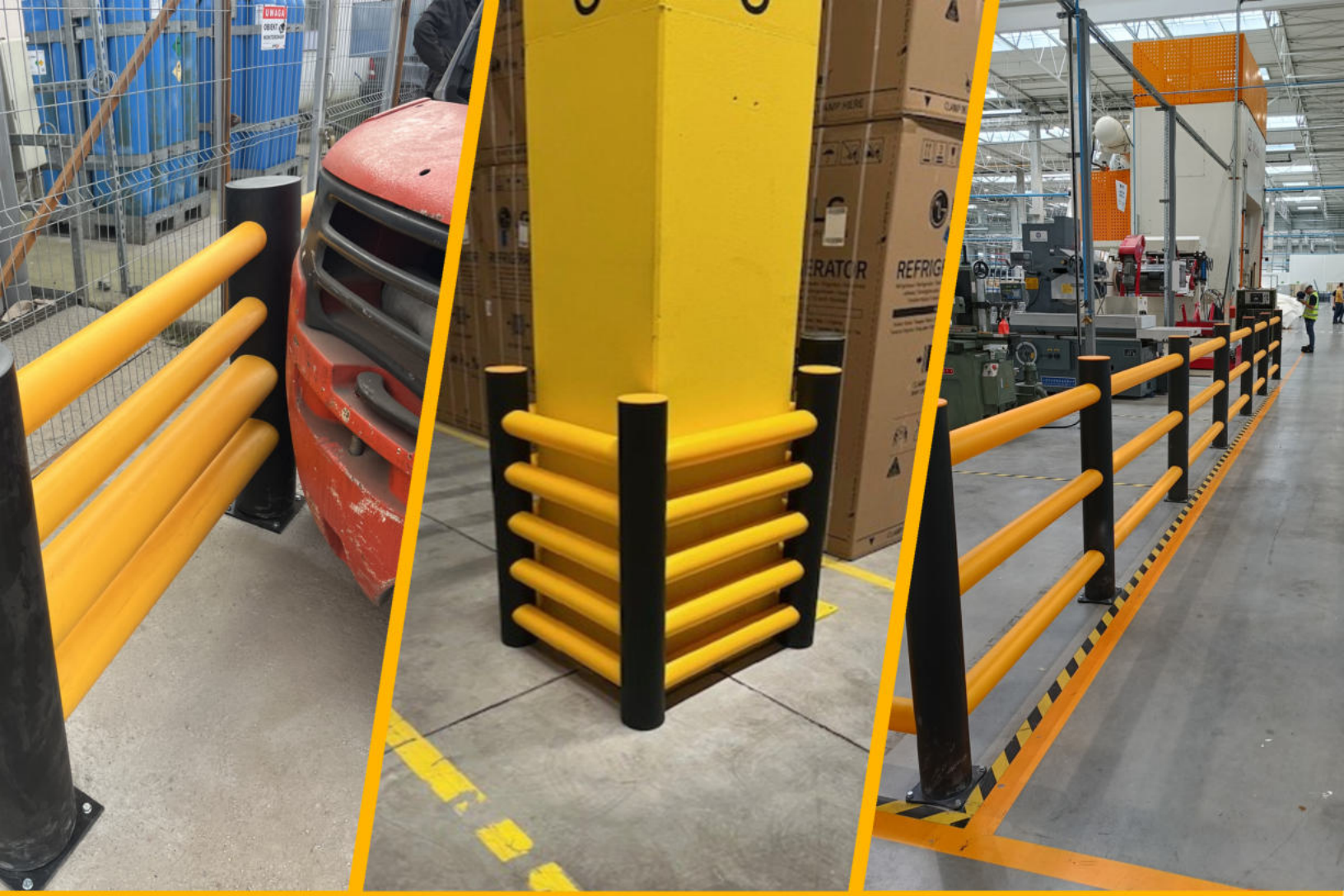


They are perfect for use in parking lots.



Most often yellow and black





SAFETYWAY

